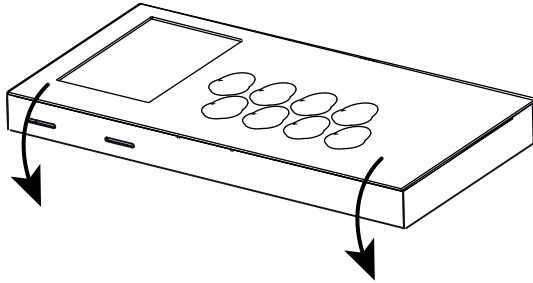


MU REDESIGN CLINIQUE

HOW TO INSTALL THE SCREEN IN THE TOPPER

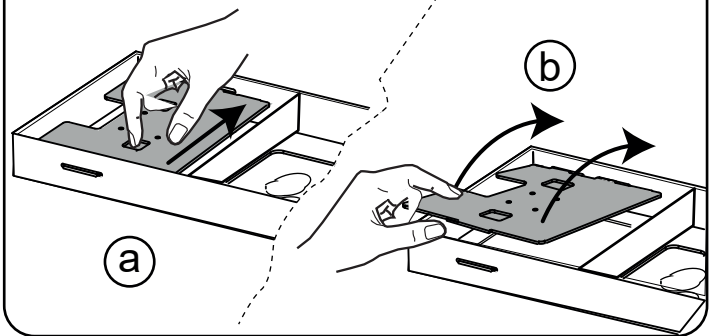
1

Retourner le topper / Return the topper.



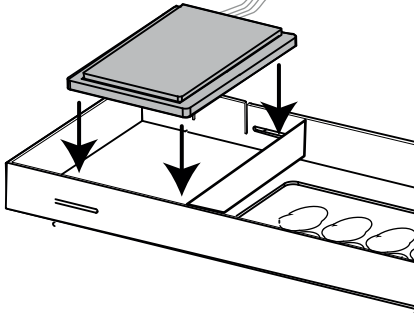
2

Enlever le support de fond de l'écran.
Remove the support of the screen.



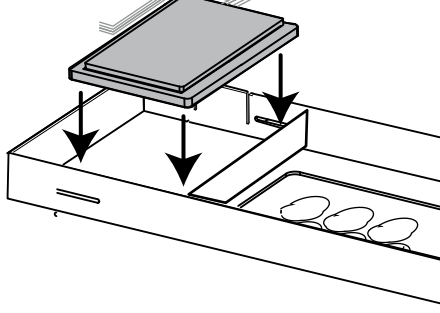
3

Mettre l'écran dans son emplacement.
Place back the screen in his place.



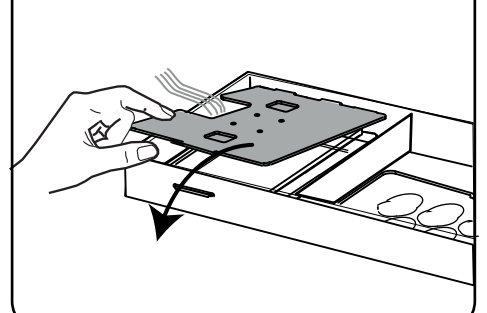
3 bis

Mettre les fils sur le côté.
Place electrical wires on the side



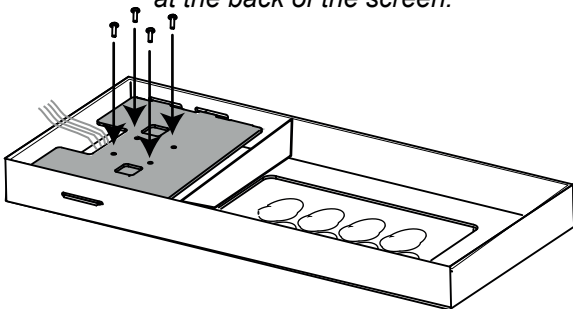
4

Remettre le support de fond de l'écran.
Place the support of the screen.



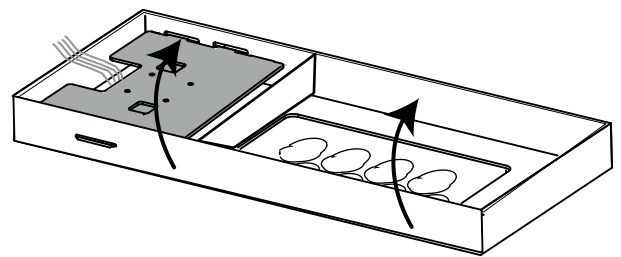
5

Vissez le support de fond de l'écran.
Screw the support of the screen
at the back of the screen.



6

Retourner le topper / Return the topper.



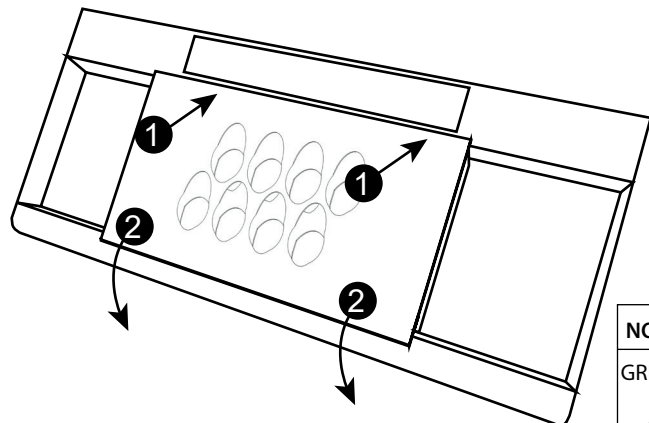
HOW TO INSTALL TOPPER AND PIANO

1

Mettre le topper parallèle à la structure et l'insérer
(en appuyant sur les 2 pattes si nécessaire) /
Put the topper parallel to the structure and insert it
by pushing on the 2 feet if necessary.

2

Puis rabaisser le Topper
dans son emplacement /
Then lower the Topper
in his place.



NOMENCLATURE

GREEN CAST : 98%

ENCRE : 1%

ADHESIF : 1%